

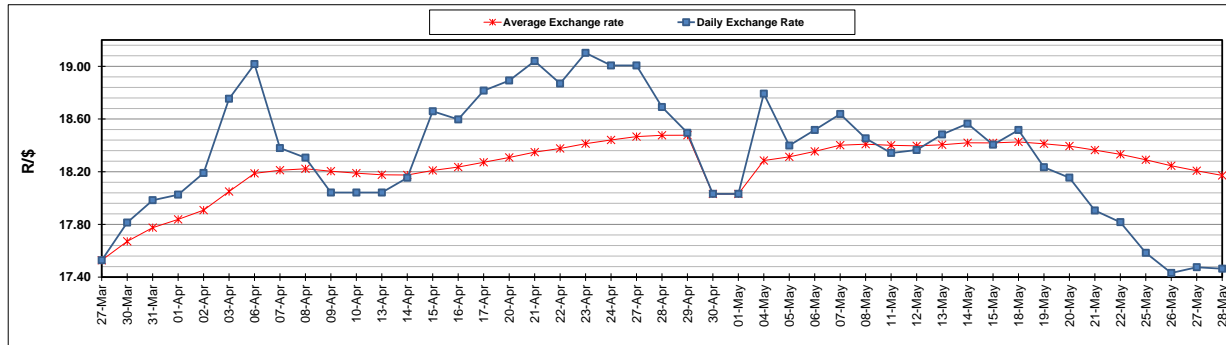
	PETROL 95 ULP	PETROL 93 ULP & LRP	DIESEL 0.05%	DIESEL 0.005%	ILL. PAR.
GAUTENG PUMP PRICE (SA c/l) AS FROM 06/05/2020	1,222.000	1,202.000	-	-	-
WHOLESALE PRICE (SA c/l) AS FROM 06/05/2020	-	-	1,108.560	1,117.960	449.828
SINGLE NATIONAL MAXIMUM RETAIL PRICE	-	-	-	-	543.000
BASIC FUEL PRICE - 28/05/2020 (SA c/l)	449.458	426.835	451.066	456.135	407.415
PRESS RELEASE CONTRIBUTION TO BFP 06/05/2020 - 28/05/2020 (SA c/l)	274.770	264.770	357.630	367.030	245.128
UNIT OVER/(UNDER) RECOVERY - 28/05/2020 (SA c/l)	(174.688)	(162.065)	(93.436)	(89.105)	(162.287)
AVERAGE BASIC FUEL PRICE 30/04/2020 - 28/05/2020	426.612	407.437	410.345	418.514	328.496
AVERAGE UNIT OVER/(UNDER) RECOVERY 30/04/2020 - 28/05/2020	(118.699)	(109.524)	(22.048)	(21.770)	(40.892)

### ANALYSIS MOVEMENT OF AVERAGE OVER/(UNDER) RECOVERY

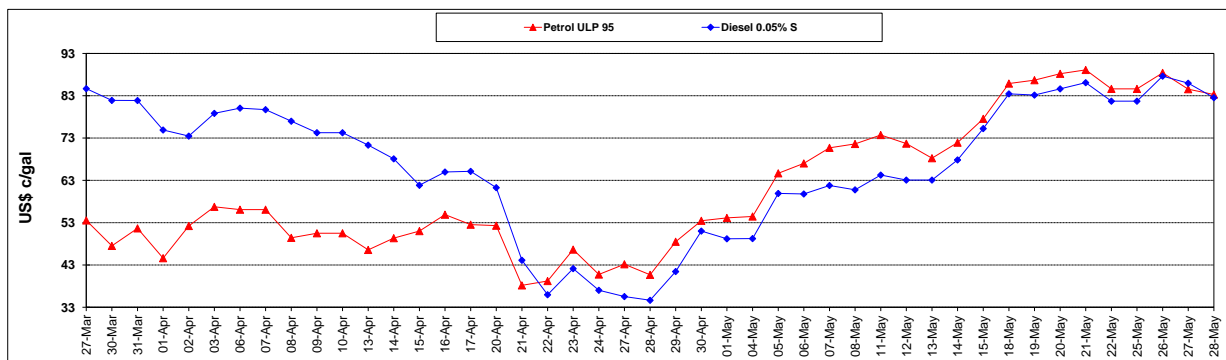
	PETROL 95	PETROL 93	DIESEL 0.05%	DIESEL 0.005%	ILL. PAR.
- MOVEMENT IN INTERNATIONAL PRODUCT PRICES	(125.874)	(116.376)	(28.949)	(28.808)	(46.416)
- MOVEMENT IN EXCHANGE RATE	7.175	6.852	6.901	7.038	5.524
AVERAGE UNIT OVER/(UNDER) RECOVERY 30/04/2020 - 28/05/2020	(118.699)	(109.524)	(22.048)	(21.770)	(40.892)

### R/\$ EXCHANGE RATE - (R/\$17.4640 - 28/05/2020)

#### EXCHANGE RATE USED IN BASIC FUEL PRICE



#### INTERNATIONAL PRODUCT PRICES OF BASKET USED IN BASIC FUEL PRICE



#### BASIC FUEL PRICE IN SA CENTS PER LITRE

